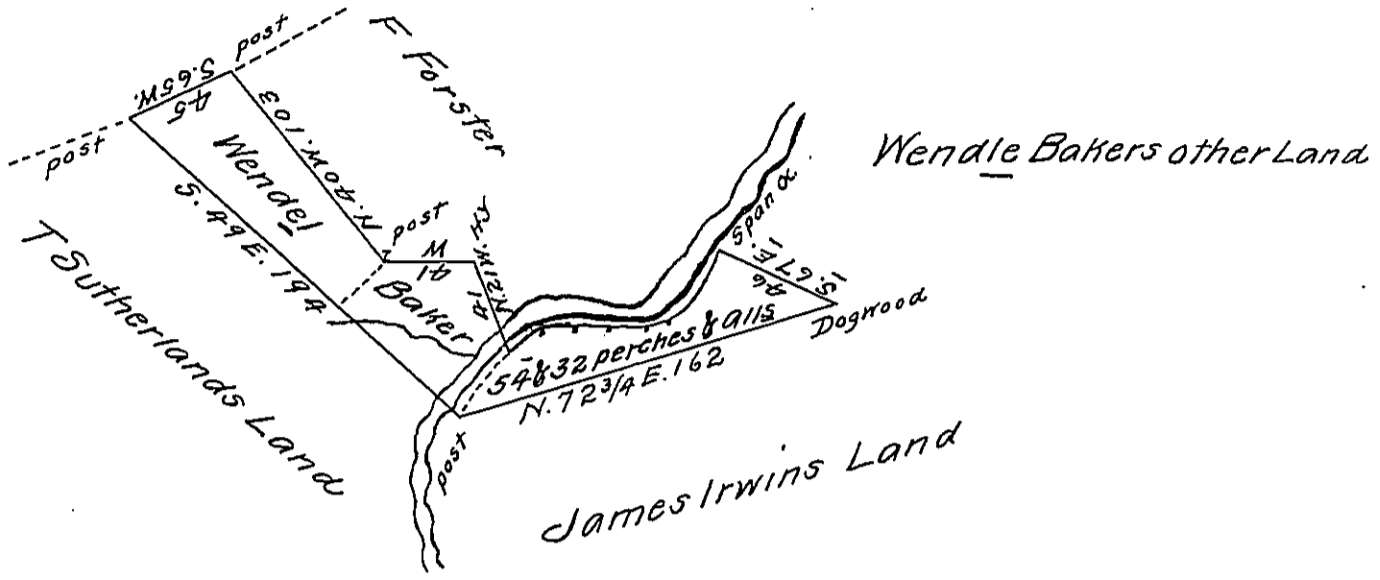


Course & Distance up the Creek

- N^o 1st - S. 4° W. 38
- 2 - S. 65° W. 10
- 3 - S. 84° W. 18
- 4 - N. 70° W. 16
- 5 - S. 84° W. 9
- 6 - S. 52° W. 18



By Virtue of a Warrt dated 2^d day of April 1787 Surveyed 2^d of August 1803 unto Wendel Baker the above described Tract of fifty four Acres & 32 perches & usual allowance - Situated adjoining his other land up Buffaloe Creek and on both sides thereof in Northumberland County -

By W^m Montgomery D.S.^r

To Sam^l Cochran Esq^r }
Surr^t. Gen^l. of Pennsylv^a }

Note the part South West of the dotted line is added to a former Survey of same Land by Order of the Board and is claimed by Tho^s Southerland who prevented the actual Survey of that part at that time but having the lines as formerly run I copied that part

W. M.

IN TESTIMONY that the above is a copy of the original remaining on file in the Department of Internal Affairs of Pennsylvania, made conformably to an Act of Assembly approved the 16th day of February, 1833, I have hereunto set my Hand and caused the Seal of said Department to be affixed at Harrisburg,

this Seventh day of September 1911

Henry Howell
Secretary of Internal Affairs.